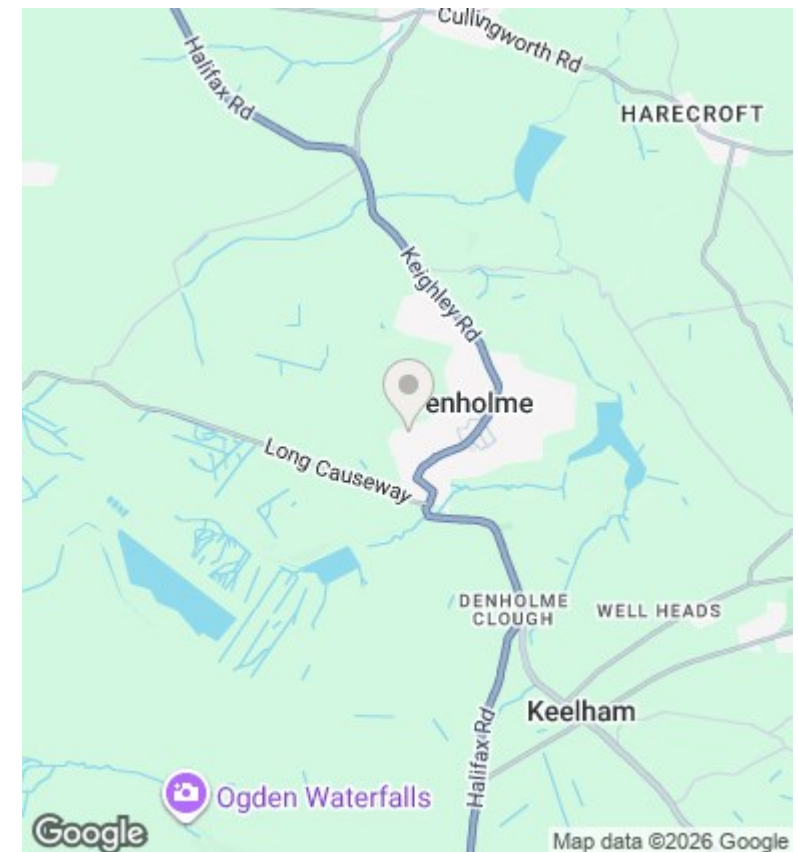
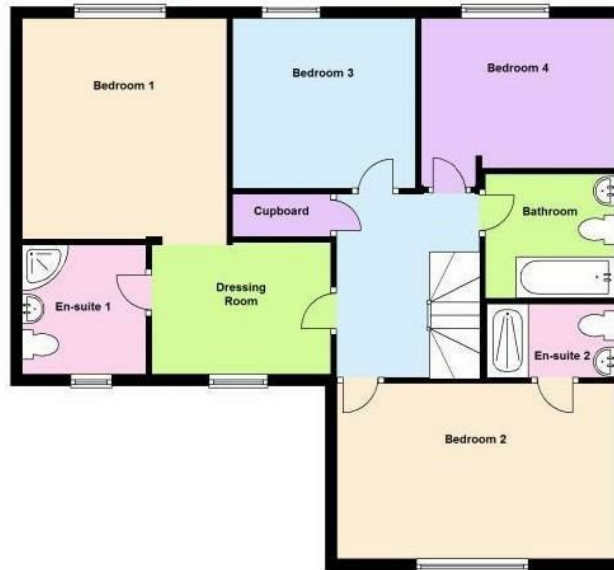


9 Netherwood, Bradford, BD13 4NR

£310,000

- SPACIOUS DETACHED PROPERTY
- UTILITY & GROUND FLOOR WC
- BACKING ON TO OPEN FIELDS
- EARLY VIEWING IS ADVISED
- FOUR /FIVE BEDROOMS
- DOUBLE INTEGRAL GARAGE
- OFF-ROAD PARKING
- TWO/THREE RECEPTION ROOMS
- PRIVATE ENCLOSED GARDEN TO REAR
- CUL-DE-SAC LOCATION



Directions

Viewings

Viewings by arrangement only.
Call 01274884040 to make an appointment.

Council Tax Band

B

EPC Rating:

C

Energy Efficiency Rating		
	Current	Potential
Very energy efficient - lower running costs		
(92 plus) A		
(81-91) B		83
(69-80) C	76	
(55-68) D		
(39-54) E		
(21-38) F		
(1-20) G		
Not energy efficient - higher running costs		
England & Wales	EU Directive 2002/91/EC	